

The MSI logo is displayed in a white, italicized, sans-serif font on the left side of the image.

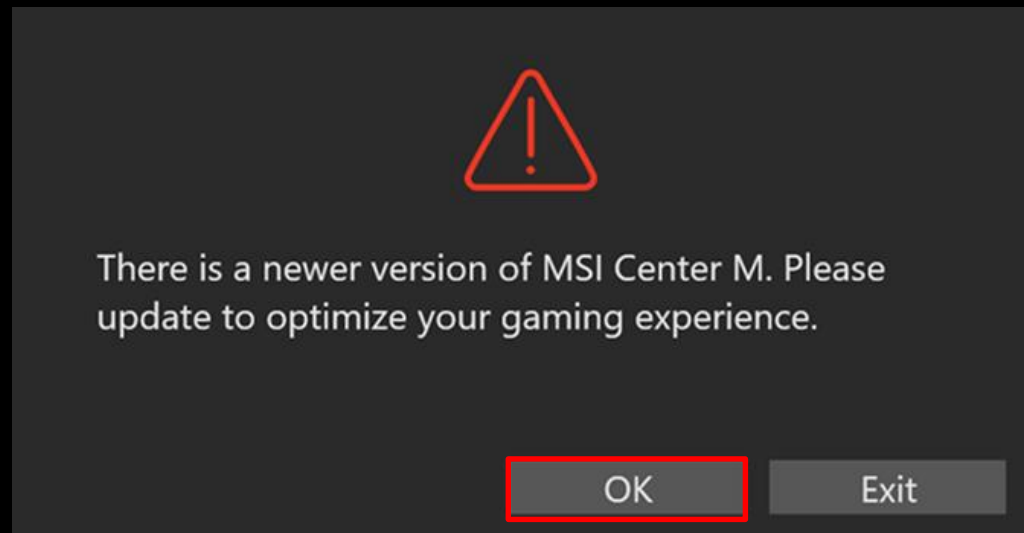
# MSI Claw

One-Stop Live update process

The logo for AI ERA OF COMPUTING is located in the bottom right corner. It features the words "AI ERA" in a large, bold, white, sans-serif font, with "OF COMPUTING" in a smaller, white, sans-serif font directly below it. The background of the entire image is a dark blue grid of interconnected nodes and lines, with faint, glowing text from a code editor visible in the background.

# Step1. Update MSI Center M

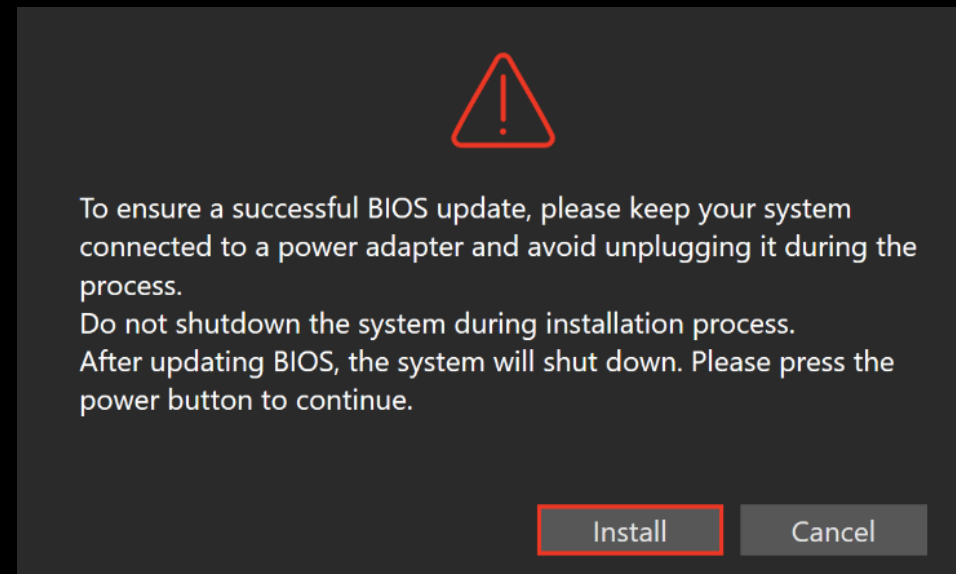
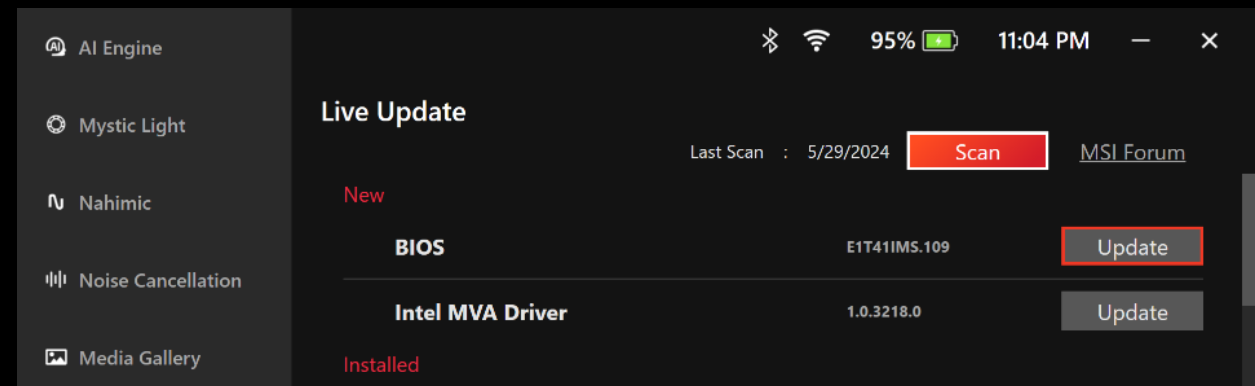
1. Connect to the network (Wi-Fi or Ethernet)
2. Launch the MSI Center M. (Taskbar or desktop icon)
3. Wait around 1 minute; then, the automatic update will pop up.
4. Select “OK” to update MSI Center M.



5. Restart system manually after the process finish

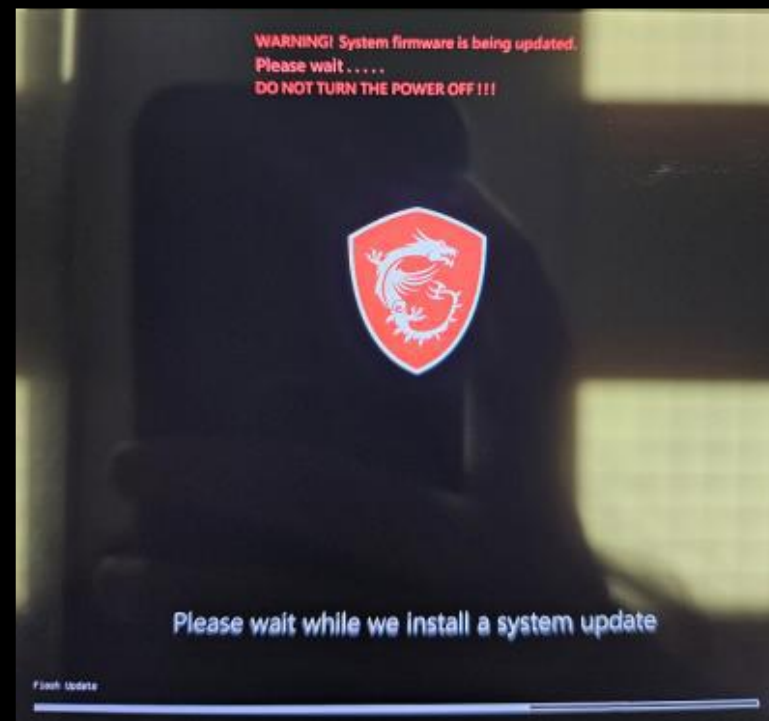
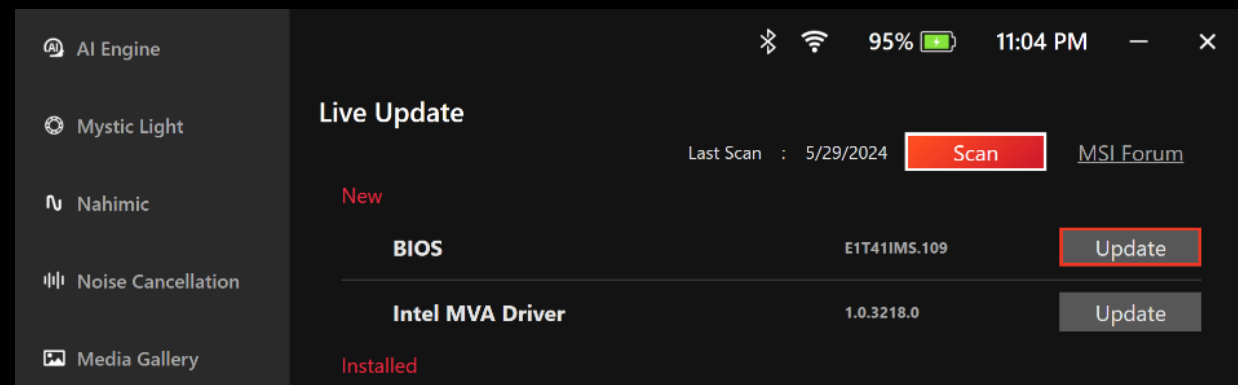
# Step 2. Update BIOS by Live Update

1. Launch MSI Center M > Settings > Live Update.
2. Choose BIOS update.
3. Connect to the AC adapter and select "Install" to update BIOS.
4. The system would automatically restart to proceed the BIOS update



## Step 2. Update BIOS by Live Update

1. Launch MSI Center M > Settings > Live Update.
2. Choose BIOS update.
3. Connect to the AC adapter and select “Install ” to update BIOS.
4. The system would automatically restart to proceed the BIOS update

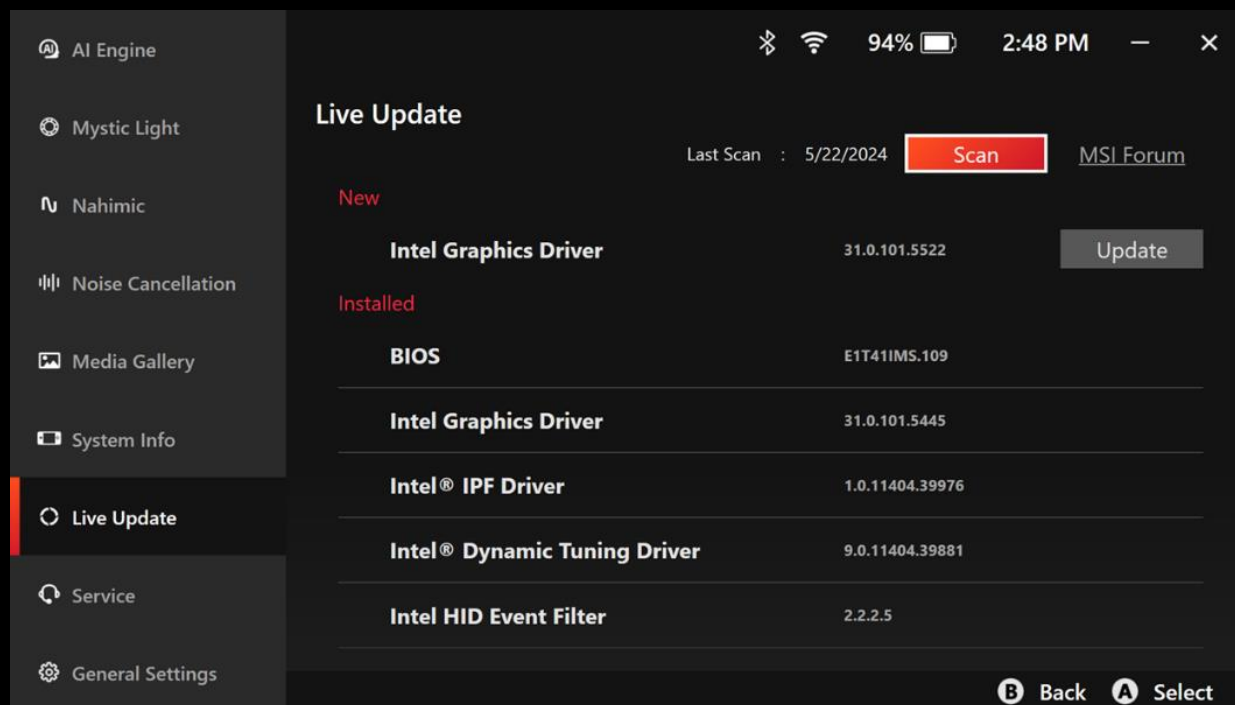


Est. 4 mins

Est. 7 mins 30S

# Step 3. Update Intel Graphics driver

1. Launch MSI Center M > Settings > Live Update.
2. Select Intel Graphics Driver, and press "Update"
3. After pressing the update, the process will execute automatically



Est. 4 mins

Est. 7 mins 30S

Est. 6 mins 45 s

# Manual update

Needed when not able to apply the updates via the push notification

- MSI Center M

Version: [1.0.2405.0603](#) or newer



Clean installation Guide

- BIOS

Version: [E1T41IMS.109](#)

Update guide is enclosed in the BIOS package

\*Note:

1. BIOS update requires a at least 65W AC power connection.
2. EVT sample does NOT support the latest BIOS update

- Intel Graphics driver (via Live Update)

Version: 31.0.101.5522

